



TEST REPORT

Report No.: A2107108-C02-R02

Date: November 25, 2021

Page 1 of 9

Applicant: RN Solutions ApS
Address: Hagensvej 14B, 9530 Støvring , Denmark

The following sample(s) and sample information was/were submitted and identified by/on the behalf of the client:

Sample Name	MODULAR-LIGHT LED LAMP
Model No.	AMD120418P
Reference Information	AMD120618P, AMD150325P, AMD150425P, AMD150625P, AMD190630P, AMD240636P, AMDV150436P, AMDV150636P
Manufacturer	RN Solutions ApS
Sample Received Date	September 15, 2021
Testing Period	September 26 - 29, 2021
Test Method & Test Result	Please refer to following pages.

Test Requested

As specified by client, according to RoHS Directive 2011/65/EU with amendment (EU) 2015/863, to test Lead (Pb), Cadmium (Cd), Mercury (Hg), Hexavalent Chromium(Cr(VI)), Polybrominated Biphenyls(PBBs), Polybrominated Diphenyl Ethers(PBDEs), Phthalates(DBP, BBP, DEHP, DIBP) in the tested materials of the submitted sample(s).

Result

Pass

Tested by:

Anne Zhao

Approved by:

[Signature]

Reviewed by:

Tony Gmy

Date of issue:

November 25, 2021



TEST REPORT



Report No.: A2107108-C02-R02

Date: November 25, 2021

Page 2 of 9

Test Method

(1) XRF screening limits for regulated elements according to IEC 62321-3-1:2013 (Unit: mg/kg)

Element	Polymers	Metals	Composite material
Pb	$BL \leq (700-3\sigma) < X$ $< (1300+3\sigma) \leq OL$	$BL \leq (700-3\sigma) < X$ $< (1300+3\sigma) \leq OL$	$BL \leq (500-3\sigma) < X$ $< (1500+3\sigma) \leq OL$
Cd	$BL \leq (70-3\sigma) < X$ $< (130+3\sigma) \leq OL$	$BL \leq (70-3\sigma) < X$ $< (130+3\sigma) \leq OL$	$LOD < X < (150+3\sigma) \leq OL$
Hg	$BL \leq (700-3\sigma) < X$ $< (1300+3\sigma) \leq OL$	$BL \leq (700-3\sigma) < X$ $< (1300+3\sigma) \leq OL$	$BL \leq (500-3\sigma) < X$ $< (1500+3\sigma) \leq OL$
Cr	$BL \leq (700-3\sigma) < X$	$BL \leq (700-3\sigma) < X$	$BL \leq (500-3\sigma) < X$
Br	$BL \leq (300-3\sigma) < X$	N/A	$BL \leq (250-3\sigma) < X$

(2) Chemical screening limits for Phthalates

Test Item(s)	Screening limits(Unit: mg/kg)
Dibutyl phthalate(DBP)	$BL \leq 600 < IN$
Benzylbutyl phthalate(BBP)	$BL \leq 600 < IN$
Di-2-ethylhexyl phthalate(DEHP)	$BL \leq 600 < IN$
Diisobutyl phthalate(DIBP)	$BL \leq 600 < IN$

(3) Chemical Test

Test Item	Test Method	Test Instrument	MDL (mg/kg)	EU RoHS Limit (mg/kg)
Lead (Pb)	IEC 62321-5:2013	ICP-OES	2	1000
Cadmium (Cd)	IEC 62321-5:2013	ICP-OES	2	100
Mercury (Hg)	IEC 62321-4:2013 +AMD1:2017	ICP-OES	2	1000
Hexavalent Chromium (Cr(VI))	IEC 62321-7-2:2017 (non-metal)	UV-Vis	8	1000
	IEC 62321-7-1:2015 (metal)	UV-Vis	0.1($\mu\text{g}/\text{cm}^2$)	1000
Polybrominated Biphenyls (PBBs)	IEC 62321-6:2015	GC-MS	5	1000
Polybrominated Diphenyl Ethers (PBDEs)	IEC 62321-6:2015	GC-MS	5	1000
Phthalates(DBP, BBP, DEHP, DIBP)	IEC 62321-8:2017	GC-MS	50	1000



TEST REPORT

Report No.: A2107108-C02-R02

Date: November 25, 2021

Page 3 of 9

Tested Material Description

No.	Description	No.	Description
1	Silvery label with black lettering	16	Soldering tin on PCB board of LED lamp
2	Silvery metal	17	LED lights
3	Translucent plastic	18	PCB board
4	Gray plastic	19	Soldering tin on PCB board
5	Grey plastic with printing	20	Silvery metal screw
6	Off-white plastic	21	Electrolytic capacitor
7	Gray heat shrinkable tube	22	Electrolytic capacitor
8	Connection wire solder	23	Diode
9	Blue thread	24	IC
10	Brown-red leather	25	IC
11	Copper color metal core	26	IC
12	Yellow thread leather with green stripes	27	Chip resistor
13	Silvery metal core	28	Chip resistor
14	White film with adhesive	29	Chip capacitor
15	LED light PCB board	30	Chip capacitor

Remark: The tested materials were specified and confirmed by the client.



TEST REPORT

Report No.: A2107108-C02-R02

Date: November 25, 2021

Page 4 of 9

Tested Result (1) Screening Result

Tested Item(s)	Screening Result									
	1	2	3	4	5	6	7	8	9	10
Lead (Pb)	BL	BL	BL	BL	BL	BL	BL	BL	BL	BL
Cadmium (Cd)	BL	BL	BL	BL	BL	BL	BL	BL	BL	BL
Mercury (Hg)	BL	BL	BL	BL	BL	BL	BL	BL	BL	BL
Total Chromium (Cr(VI))	BL	BL	BL	BL	BL	BL	BL	BL	BL	BL
Total Bromine (PBBs & PBDEs)	BL	N/A	BL	BL	BL	BL	BL	N/A	BL	BL
Dibutyl phthalate(DBP)	BL	N/A	BL	BL	BL	BL	BL	N/A	BL	BL
Benzylbutyl phthalate(BBP)	BL	N/A	BL	BL	BL	BL	BL	N/A	BL	BL
Di-2-ethylhexyl phthalate(DEHP)	BL	N/A	BL	BL	BL	BL	BL	N/A	BL	BL
Diisobutyl phthalate(DIBP)	BL	N/A	BL	BL	BL	BL	BL	N/A	BL	BL

Tested Item(s)	Screening Result									
	11	12	13	14	15	16	17	18	19	20
Lead (Pb)	BL	BL	BL	BL	BL	BL	BL	BL	BL	BL
Cadmium (Cd)	BL	BL	BL	BL	BL	BL	BL	BL	BL	BL
Mercury (Hg)	BL	BL	BL	BL	BL	BL	BL	BL	BL	BL
Total Chromium (Cr(VI))	BL	BL	BL	BL	BL	BL	BL	BL	BL	BL
Total Bromine (PBBs & PBDEs)	N/A	BL	N/A	BL	BL	N/A	BL	BL	N/A	N/A
Dibutyl phthalate(DBP)	N/A	BL	N/A	BL	BL	N/A	BL	BL	N/A	N/A
Benzylbutyl phthalate(BBP)	N/A	BL	N/A	BL	BL	N/A	BL	BL	N/A	N/A
Di-2-ethylhexyl phthalate(DEHP)	N/A	BL	N/A	BL	BL	N/A	BL	BL	N/A	N/A
Diisobutyl phthalate(DIBP)	N/A	BL	N/A	BL	BL	N/A	BL	BL	N/A	N/A

Tested Item(s)	Screening Result									
	21	22	23	24	25	26	27	28	29	30
Lead (Pb)	BL	BL	BL	BL	BL	BL	BL	BL	BL	BL
Cadmium (Cd)	BL	BL	BL	BL	BL	BL	BL	BL	BL	BL
Mercury (Hg)	BL	BL	BL	BL	BL	BL	BL	BL	BL	BL
Total Chromium (Cr(VI))	BL	BL	BL	BL	BL	BL	BL	BL	BL	BL
Total Bromine (PBBs & PBDEs)	BL	BL	BL	X	BL	BL	BL	BL	BL	BL
Dibutyl phthalate(DBP)	BL	BL	BL	BL	BL	BL	BL	BL	BL	BL
Benzylbutyl phthalate(BBP)	BL	BL	BL	BL	BL	BL	BL	BL	BL	BL
Di-2-ethylhexyl phthalate(DEHP)	BL	BL	BL	BL	BL	BL	BL	BL	BL	BL
Diisobutyl phthalate(DIBP)	BL	BL	BL	BL	BL	BL	BL	BL	BL	BL

Shenzhen Alpha Product Testing Co., Ltd.

Building i, No.2, Lixin Road, Fuyong Street, Bao'an District, 518103, Shenzhen, Guangdong, China



TEST REPORT

Report No.: A2107108-C02-R02

Date: November 25, 2021

Page 5 of 9

(2) Test result for Chemical Confirmation

(a) The test result of PBBs, PBDEs :

Testing item	Result (mg/kg)
	24
Sum of polybrominated biphenyls (PBBs)	N.D
Sum of polybrominated diphenyl ethers(PBDEs)	N.D

Remark: N.D = Not Detected (< MDL or LOQ), MDL = Method Detection Limit
IN= Inconclusive, Further chemical test, X = The range of needing to do further testing
BL = Below the screening limit, OL = Over the screening limit.
N/A= Not applicable
3σ= The reproducibility of analytical instruments
* = The screened result was found and further chemical test
When conducting the test for PBBs&PBDEs, XRF was introduced to screen Br exclusively.
When conducting the test for Hexavalent Chromium, XRF was introduced to screen Chromium exclusively.
LOQ = Limit of Quantification, The LOQ of Hexavalent chromium is 0.10 µg/cm²
LOD= Detection limit
mg/kg = ppm = parts per million, 1000 mg/kg = 0.1%



TEST REPORT

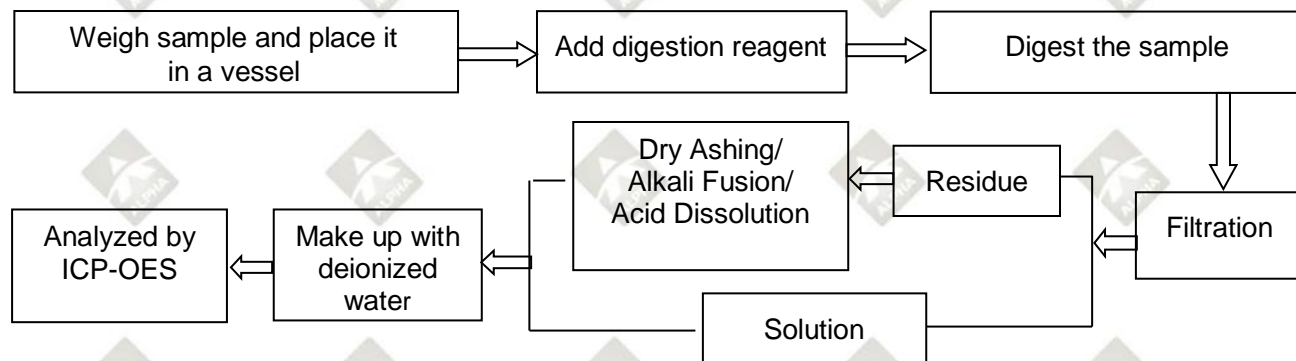
Report No.: A2107108-C02-R02

Date: November 25, 2021

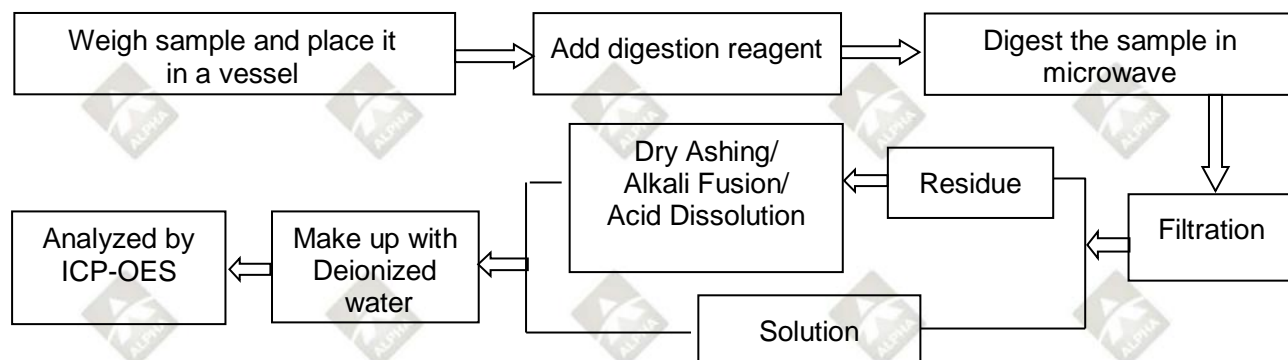
Page 6 of 9

Test Process

1. Lead(Pb), Cadmium(Cd), Chromium(Cr)

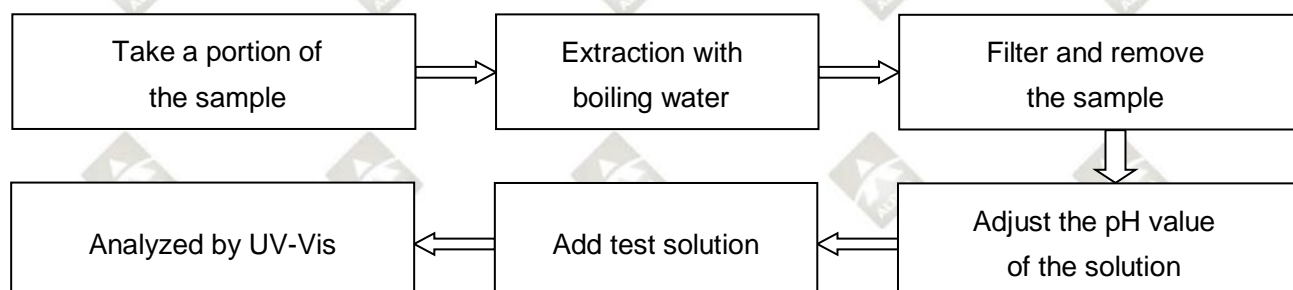


2. Mercury(Hg)



3. Hexavalent Chromium (Cr (VI))

(1) IEC 62321-7-1:2015 Plating/Metal sample(s)





TEST REPORT

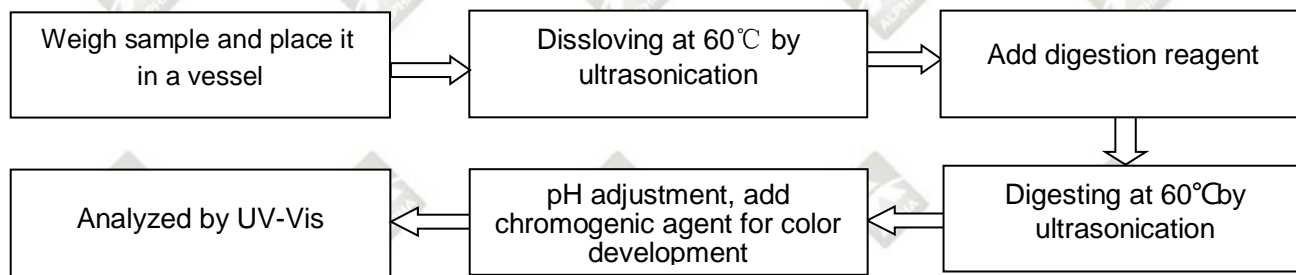
Report No.: A2107108-C02-R02

Date: November 25, 2021

Page 7 of 9

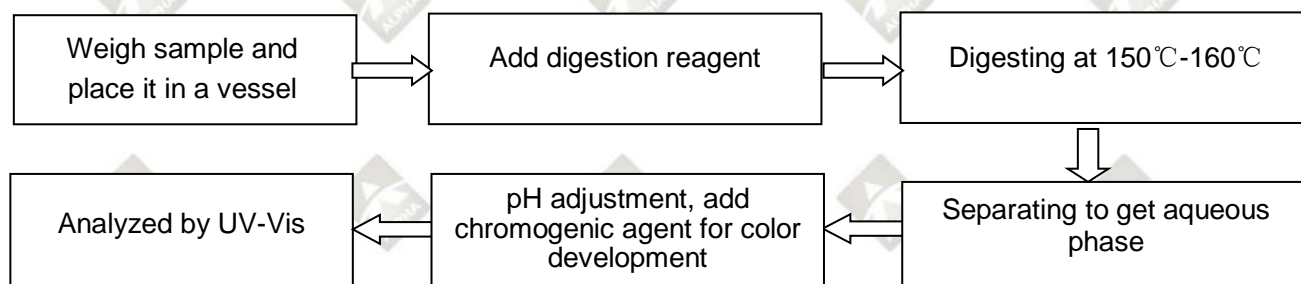
(2) IEC 62321-7-2:2017

Non-metal sample(s) (Material ABS/PC/PVC)

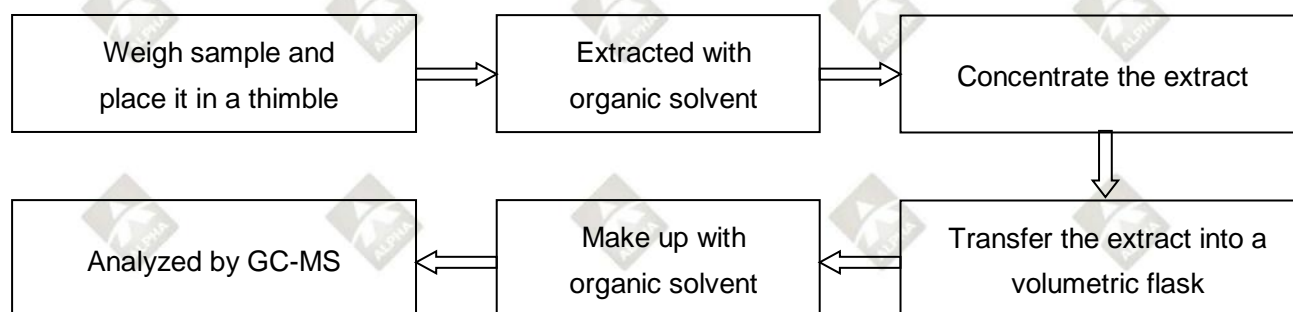


(3) IEC 62321-7-2:2017

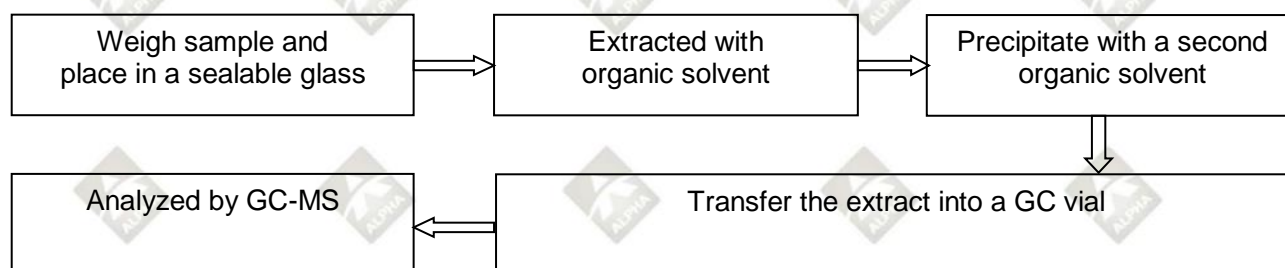
Non-metal sample(s) (Others)



4. Polybrominated Biphenyls (PBBs), Polybrominated Diphenyl Ethers (PBDEs)



5. Phthalates(DBP/BBP/DEHP/DIBP)



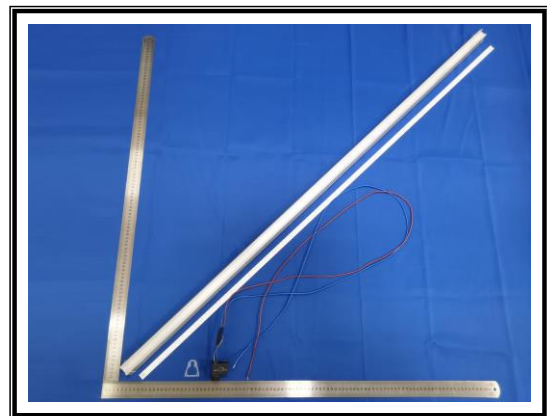
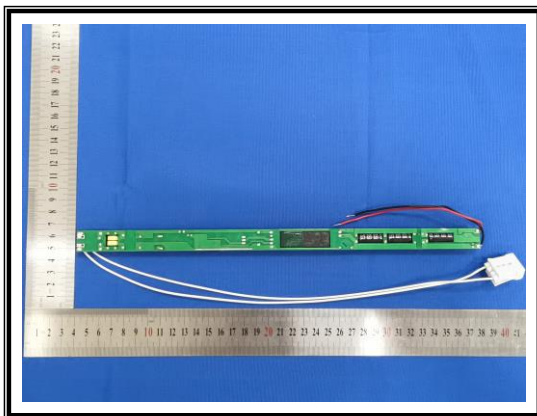
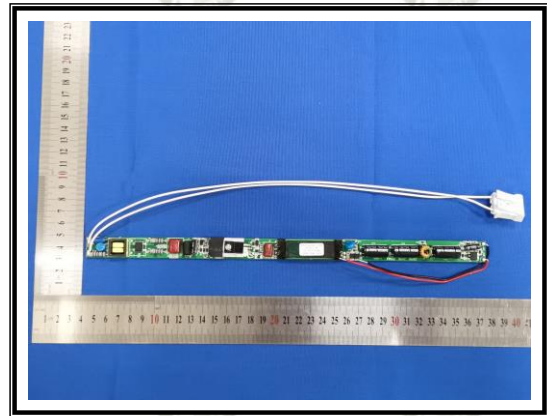
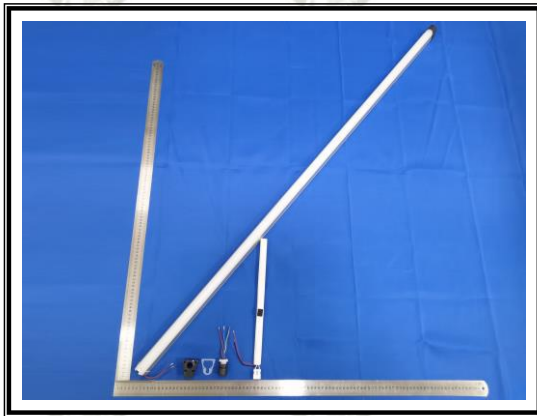
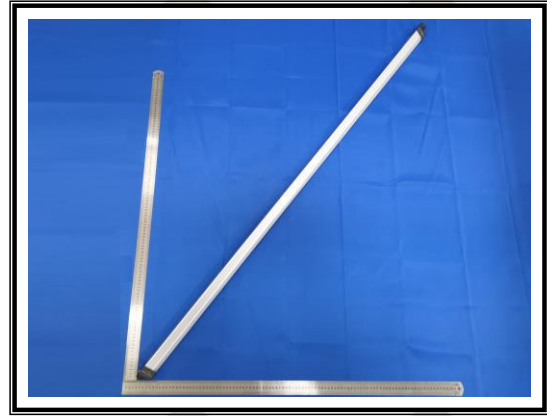
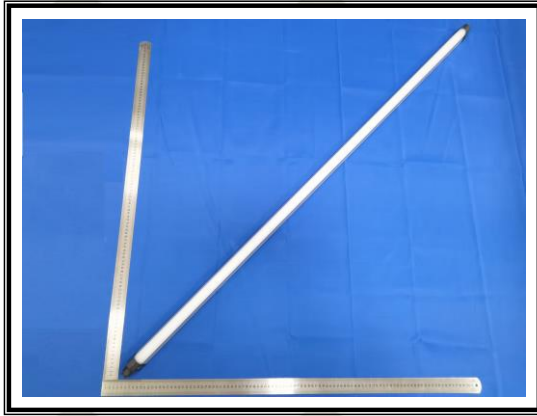
TEST REPORT

Report No.: A2107108-C02-R02

Date: November 25, 2021

Page 8 of 9

Tested sample photo(s)



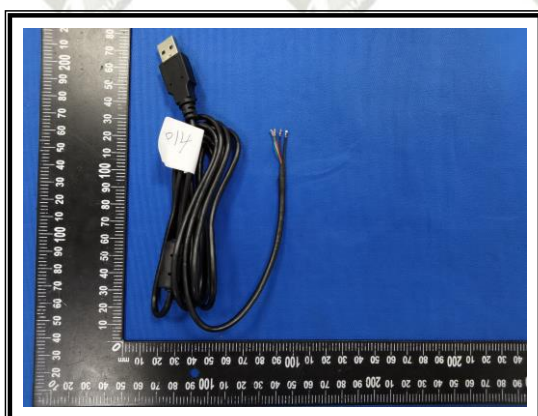
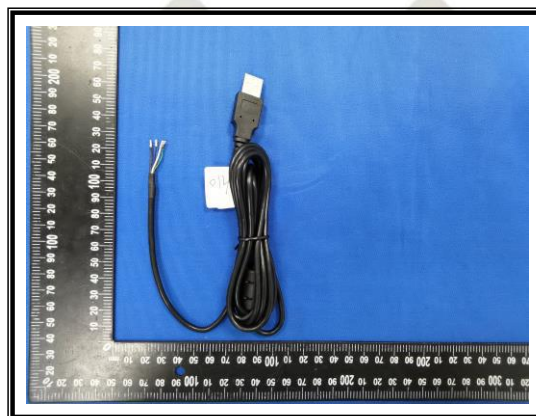
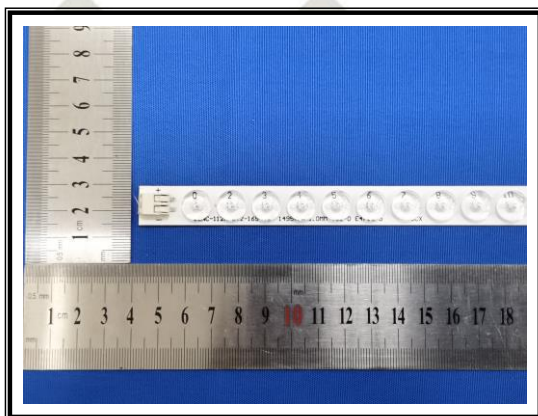
TEST REPORT

Report No.: A2107108-C02-R02

Date: November 25, 2021

Page 9 of 9

Tested sample photo(s)



--- End of report ---

Statement:

1. The sample(s) and sample Information was/were provided by the client who should be responsible for the authenticity which ALPHA hasn't verified.
2. The result(s) shown in this report refer(s) only to the sample(s) tested.
3. According to the applicant's requirement, we only test the specified material of submit sample(s).
4. Without written approval of ALPHA, this report can't be reproduced except in full.